

# Observation & Discussion

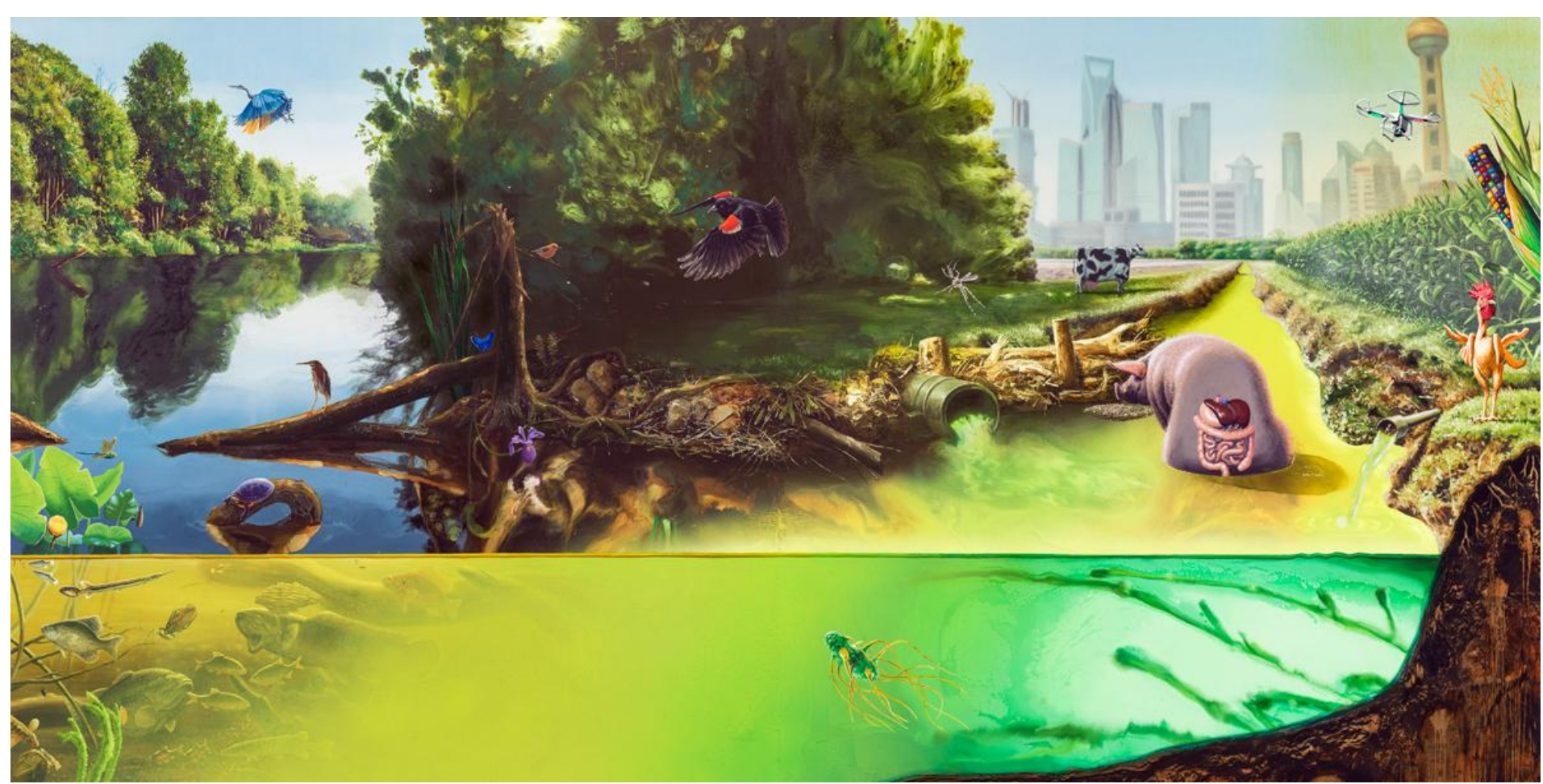
1. Observe images silently

Quiet write in notebooks

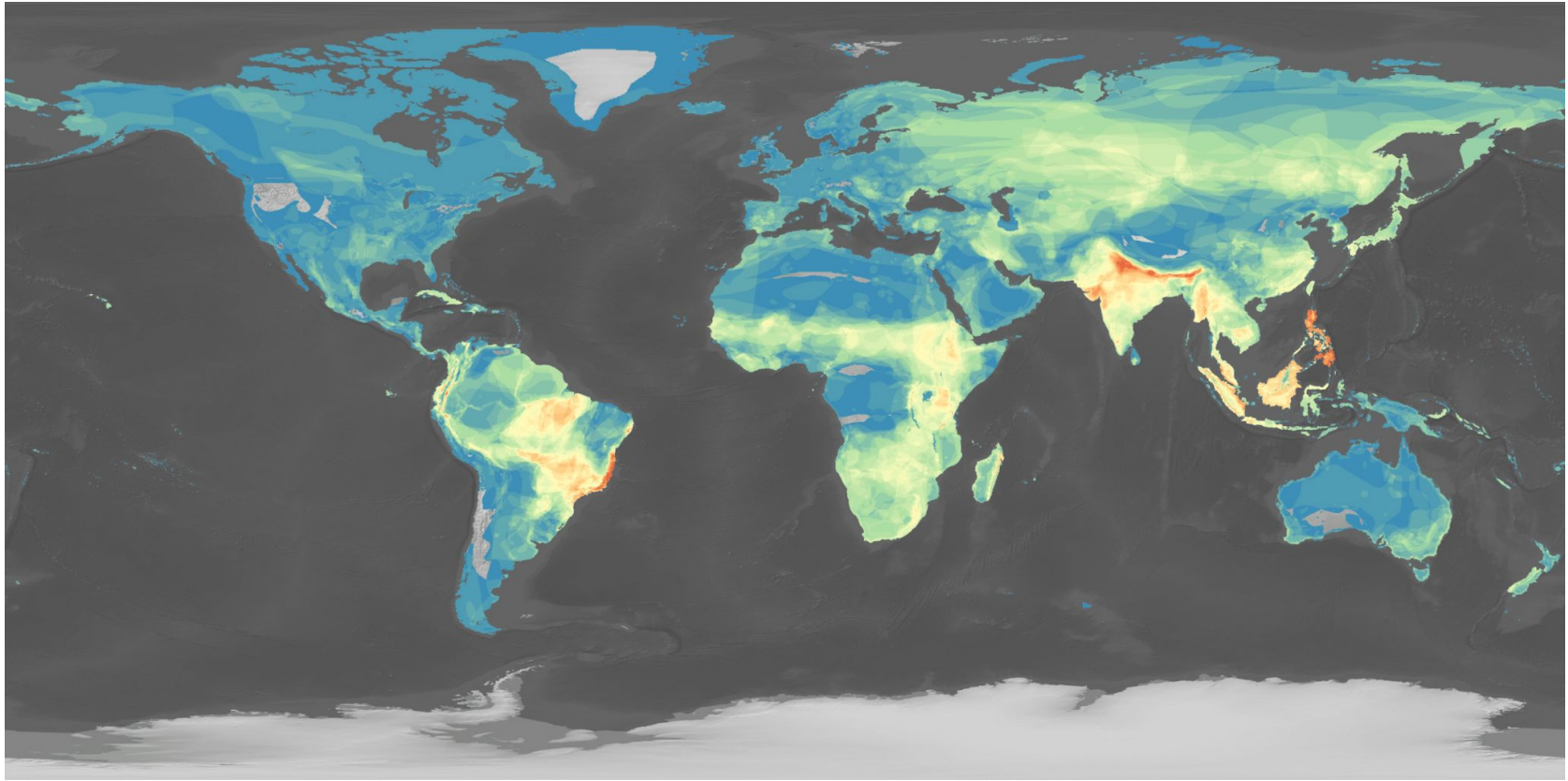
2. Group share: “*What’s going on in this image?*”

1

2



*What's going on in this image?*

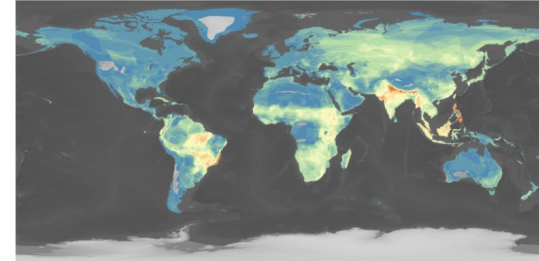


*Before seeing the title of this map, students will take a few minutes to write about what they think they are seeing in this map.*

[Link to handout](#)

**What Can We Find in the Map Data?**

Directions- View the map below and answer the questions that follow.

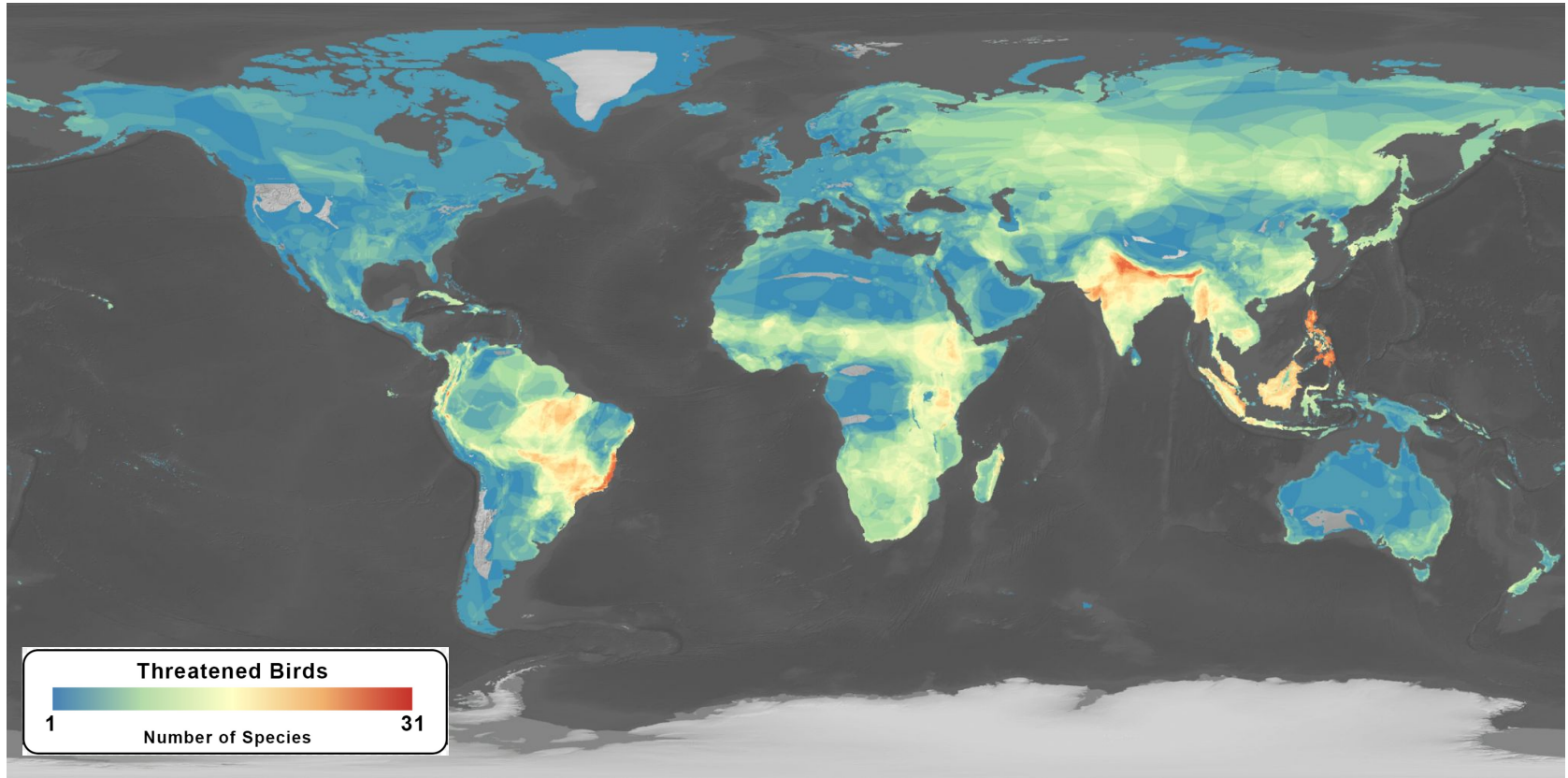


<https://co2.noaa.gov/catalog/datasets/>

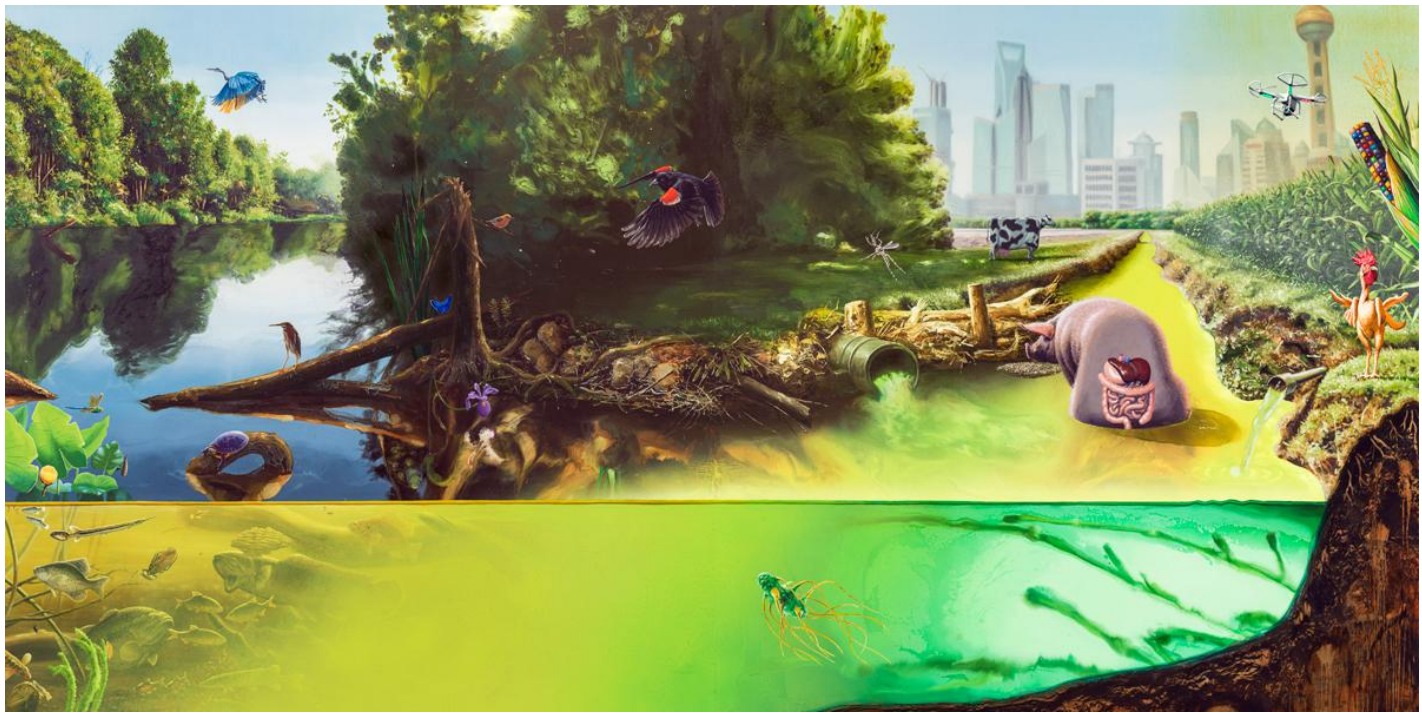
1. Look at the map above where color is used to communicate data. Describe what colors you see and where you see them. If it is helpful, you can draw arrows to locations on the map that connect to your sentences.

2. If you had to guess what the data shows, what would you say? Using this idea, make an observation comparing two areas with different colors.

*What's going on in this image?*



What questions do we have about the map image?



*Watershed*, Alexis Rockman (2015). Collection Jonathan O'Hara © 2015 Alexis Rockman